



NANO SOMA A WONDER SPRAY

DISCOVERY OF DR. P. R. RAGHAVAN

A Research Scientist, PHD in Organic Chemistry, Oregon State University, USA
and M.S. in Chemistry from IIT Bombay.

Manufactured in Switzerland

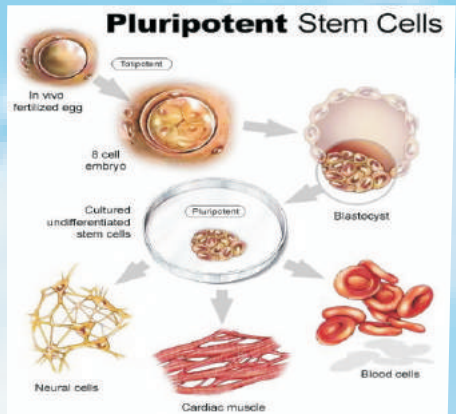
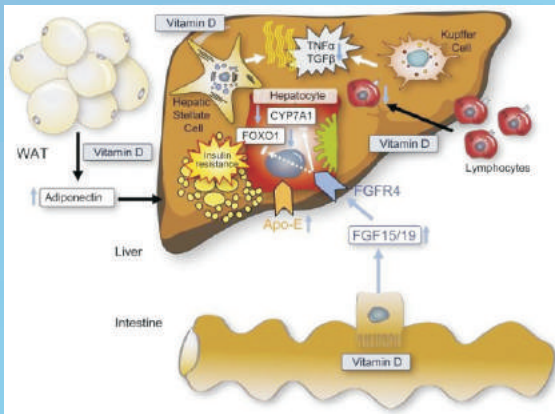


A MONUMENTAL FINDING

Discovered by a research scientist Dr. P. R. Raghavan, the patented formula in NANO SOMA (Metadichol) represents an innovative modern breakthrough that addresses immune dysfunction at the cellular level. Formulated using nanotechnology as both a dietary supplement and as a topical solution, this incredible discovery (which comes from a powerful plant wax extracted from sugarcane) has been found to support many of the physiological functions essential for optimal skin and immune health. After spending decades in the pharmaceutical industry, Dr. Raghavan witnessed the troubling increase in the number of drugs reaching the market while things like diabetes, high blood pressure, and high cholesterol continued rising despite this. Applying his extensive research in drug metabolism and biochemistry, including 25 years in drug discovery with Columbia University, Max Planck Institute, Ciba-Geigy, and Boehringer Ingelheim, Dr. Raghavan sought a smarter and safer, non-drug alternative. In 2008, his research led to the discovery of the patented formula in NANO SOMA known as Metadichol, a plant-based emulsion of nano policosanol that the body can recognize and utilize efficiently.

Enhancing Health & Longevity

- ◆ Rejuvenate the skin
- ◆ Improve energy level
- ◆ Enhances wound healing
- ◆ Assists cardiovascular health
- ◆ Modulate the Immune System
- ◆ Reduces inflammation and pain
- ◆ Improves longevity and reverse aging
- ◆ Serves as Vitamin D and Vitamin C substitute
- ◆ Repairs damaged blood vessels & scar tissues



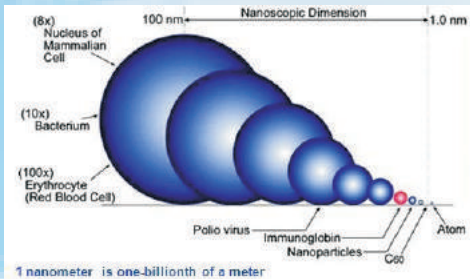
Nano Soma regulates and reduces the TNF-alpha levels which can in turn prevent diseases associated with elevated level of TNF-alpha in the body. **Nano Soma** activates the Vitamin D Receptor (VDR) encoded by the VDR gene located on **Chromosome 12**, to form a complex that binds to hormone response elements on DNA. This leads to expression or repression of specific gene proteins and brings about the desired physiological changes.

Nano Soma is a special formulation of Water Soluble Policosanol which contains Policosanol Nanoparticles. The primary ingredients of Nano Soma are Water, Vitamin E and Policosanol from Sugar Cane and Rice Wax.

It is a natural food supplement with remarkable medical benefits.

Manufactured in a modern state of the art facility in Switzerland.

Nano Soma is a natural, non-toxic food supplement that has no known side effects. All its ingredients are classified by U.S. FDA as a **GRAS (Generally Regarded As Safe)** product.



A formulation of policosanol nanoparticles and its remarkable medical benefits

Serving as a substitute for **Vitamin D**

A natural, safe, non-toxic and unique health supplement

Increasing Vitamin C & Adiponectin

Controls various biomarkers like Triglycerides, Glucose, HBA1C, ESR, Systolic and Diastolic BP and many others

Preventing the underlying health problem and enhancing the body's inherent healing power to restore optimal health

Reducing NF-kB & TNF-α

Improving the immune system and physiological functions for disease prevention

FACT: Human body is 90% bacteria and virus, 7% is junk DNA left over from our evolution and only 2-3% of our genes are Human. These genes contain DNA from evolution and consist of similar one from animals and other forms of life. No two people have the same bacterial composition. Bacterial composition is different for person say living in India compared to one living in USA or Australia. The bacterial composition changes hour-to-hour and minute-to-minute and place-to-place.

FACT: Greater than 95% of bacteria and virus are benign. They pay us rent by multiplying in our body and control the immune system. They make for us products like FOLIC ACID , VITAMINS B-1 TO B-6 TO B-12 , etc. All these are essential for Human life.

FACT: Less than 5% of our bacteria are harmful and the other 95% keep the harmful ones in check.

FACT: Because of our life style (drinking, smoking, lack of sleep, unhealthy food, etc.) and taking antibiotics, the balance between the good and bad bacteria changes and the bad bacteria begins to multiply and we get diseases.

FACT: The body gets rid of bacteria in many ways - mild fever, sweat, urine, faeces, corn on skin, dysentery, warts, sneezing, mild headaches, cough & cold or even goose pimples. These are not diseases but are our body's immune system in action. Unfortunately, people consider this process to be a disease and treat with prescription drugs. This causes further imbalance and leads to diseases.

FACT: Once you take Nano Soma it activates the IMMUNE SYSTEM and it analyzes the bacteria composition and goes to work by inducing the good bacteria in the immune system. Depending on the imbalance, it will take hours to days or weeks or months and this varies from patient to patient depending on the severity of the imbalance.

FACT: Any effects you may see is that it is working to restore body's balance and not to be considered to be a side effect.

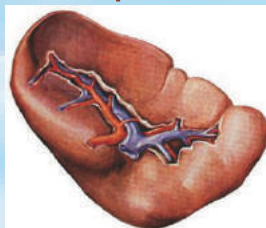
Nanoparticles of Human Organ

Lungs



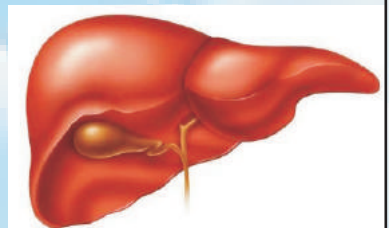
Particles larger than **3,000 nm** may end up in the **Lungs**.

Spleen



Particles larger than **300 nm** may end up in the **Spleen**.

Liver



Particles larger than **100 nm** may end up in the **Liver**.

Nano Soma is a policosanol nanoparticles which is less **than 60 nm** in diameter, therefore fewer of them would end up being trapped in the organs and more of them are able to circulate through the bloodstream until they reach a targeted cell. Nanoparticles are more stable, provide a higher precision of delivery to targeted tissues and cells, and are more effective in improving the immune health.

DISEASES AND HEALTH PROBLEMS ASSOCIATED WITH **LOW ADIPONECTIN PROTEIN**

| | | | |
|---------------------|-----------------------------|-------------------|--|
| 1 - TYPE 2 DIABETES | 4 - INSULIN RESISTANCE | 6 - HYPERURICEMIA | 9 - NONALCOHOLIC |
| 2 - OBESITY | 5 - CORONARY ARTERY DISEASE | 7 - DYSLIPIDEMIA | STEATOHEPATITIS |
| 3 - HYPERTENSION | | 8 - SLEEP APNEA | 10- PERCUTANEOUS CORONARY INTERVENTION |

NANO SOMA **INCREASES ADIPONECTIN PROTEIN**

DISEASES AND HEALTH PROBLEMS ASSOCIATED WITH **GENE : CCL2**

| | | |
|--|--|--|
| 1. Diabetes Mellitus, Type 2 | 63. Neuropsychological Tests | 123. Respiratory Distress Syndrome, Adult |
| 2. Inflammation | 64. Cytomegalovirus Infections | 124. Neural Tube Defects |
| 3. Disease Progression | 65. Cognition | 125. Cognition Disorders |
| 4. HIV Infections | 66. Pulmonary Disease, Chronic Obstructive | 126. Cumulative Trauma Disorders |
| 5. Tuberculosis, Pulmonary | 67. Neoplasm Metastasis | 127. Demyelinating Diseases |
| 6. Lupus Erythematosus, Systemic | 68. Neoplasm Recurrence, Local | 128. Diabetic Angiopathies |
| 7. Coronary Artery Disease | 69. Purpura, Schoenlein-Henoch | 129. Encephalomyelitis, Autoimmune, Experimental |
| 8. Lupus Nephritis | 70. Ovarian Neoplasms | 130. Fatty Liver, Alcoholic |
| 9. Kidney Failure, Chronic | 71. Inflammatory Bowel Diseases | 131. Giant Cell Arteritis |
| 10. Myocardial Infarction | 72. Autoimmune Diseases | 132. Glomerulonephritis |
| 11. Alzheimer Disease | 73. Liver Neoplasms | 133. Glomerulosclerosis, Focal Segmental |
| 12. Arthritis, Rheumatoid | 74. Hypersensitivity | 134. Heart Defects, Congenital |
| 13. Atherosclerosis | 75. Carcinoma, Hepatocellular | 135. Hematologic Neoplasms |
| 14. Hypertension | 76. Vasculitis | 136. Memory, Short-Term |
| 15. Stroke | 77. Ascites | 137. Mood Disorders |
| 16. Tuberculosis | 78. Diabetic Foot | 138. Gastritis, Atrophic |
| 17. Asthma | 79. Kidney Neoplasms | 139. Hemochromatosis |
| 18. Acute Disease | 80. Latent Tuberculosis | 140. HTLV-I Infections |
| 19. Crohn Disease | 81. Lung Diseases | 141. Lung Diseases, Fungal |
| 20. Schizophrenia | 82. Colitis, Ulcerative | 142. Musculoskeletal Diseases |
| 21. Glomerulonephritis, IGA | 83. Uveitis, Anterior | 143. Nasopharyngeal Neoplasms |
| 22. Hepatitis C | 84. Sarcoidosis, Pulmonary | 144. Carcinoma |
| 23. Insulin Resistance | 85. Pre-Eclampsia | 145. Obstetric Labor, Premature |
| 24. Pancreatitis | 86. Macular Edema | 146. Peripheral Vascular Diseases |
| 25. Behcet Syndrome | 87. Parkinson Disease | 147. Pregnancy Complications, Hematologic |
| 26. Cardiovascular Diseases | 88. Coronary Disease | 148. Prostatic Hyperplasia |
| 27. Diabetes Mellitus | 89. Bacterial Infections | 149. Radiation Pneumonitis |
| 28. Diabetic Retinopathy | 90. Kidney Diseases | 150. Sarcoma, Kaposi |
| 29. Carcinoma, Non- Small-Cell Lung | 91. Osteoporosis | 151. Schizophrenic Psychology |
| 30. Diabetic Nephropathies | 92. Peritonitis | 152. Viremia |
| 31. Obesity | 93. Severe Acute Respiratory Syndrome | 153. Wet Macular Degeneration |
| 32. Breast Neoplasms | 94. Infection | 154. Esophagitis |
| 33. Premature Birth | 95. Weight Gain | 155. Glioma |
| 34. Disease Susceptibility | 96. Birth Weight | 156. Hashimoto Disease |
| 35. Hepatitis C, Chronic | 97. AIDS Dementia Complex | 157. Hypoplastic Left Heart Syndrome |
| 36. Neoplasms | 98. Carcinoma, Squamous Cell | 158. Drug Toxicity |
| 37. Colorectal Neoplasms | 99. Diabetes Complications | 159. Duodenal Ulcer |
| 38. Lung Neoplasms | 100. Edema | 160. Alcoholism |
| 39. Scleroderma, Systemic | 101. Psychiatric Status Rating Scales | 161. Arthritis, Juvenile Rheumatoid |
| 40. Hepatitis B | 102. Glioblastoma | 162. Auditory Threshold |
| 41. Multiple Sclerosis | 103. Carcinoma, Renal Cell | 163. Cystic Fibrosis |
| 42. Carotid Artery Diseases | 104. Carotid Stenosis | 164. Cerebrovascular Accident |
| 43. Metabolic Syndrome X | 105. Chorioamnionitis | 165. Stomach Ulcer |
| 44. Liver Cirrhosis | 106. Sepsis | 166. Vasculitis, Allergic Cutaneous |
| 45. Prostatic Neoplasms | 107. Thrombocytopenia | 167. Macular Degeneration |
| 46. Proteinuria | 108. Lymphoma, Non-Hodgkin | 168. Neoplasms, Glandular and Epithelial |
| 47. Aspergillosis | 109. Stomach Neoplasms | 169. Neovascularization, Pathologic |
| 48. Diabetes Mellitus, Type 1 | 110. Adenocarcinoma | 170. Obsessive-Compulsive Disorder |
| 49. Aggressive Periodontitis | 111. Enterovirus Infections | 171. Pain, Postoperative |
| 50. Urinary Bladder Neoplasms | 112. Encephalitis, Japanese | 172. Pneumoconiosis |
| 51. Bipolar Disorder | 113. Fetal Membranes, Premature Rupture | 173. Precancerous Conditions |
| 52. Brain Ischemia | 114. Diabetes, Gestational | |
| 53. Psoriasis | 115. Osteoarthritis, Knee | |
| 54. Respiratory Syncytial Virus Infections | 116. Tuberculosis, Spinal | |
| 55. Pancreatitis, Chronic | 117. Varicose Veins | |
| 56. Myocardial Ischemia | 118. Polycystic Ovary Syndrome | |
| 57. Depressive Disorder, Major | 119. Spondylitis, Ankylosing | |
| 58. Neoplasm Invasiveness | 120. Translocation, Genetic | |
| 59. Bronchitis, Viral | 121. Tuberculosis, Meningeal | |
| 60. Renal Insufficiency, Chronic | 122. Radiation Injuries | |
| 61. Retinal Vein Occlusion | | |
| 62. Chronic Disease | | |
| | | 174. Pregnancy Complications |
| | | 175. Still's Disease, Adult-Onset |
| | | 176. Uveitis, Posterior |
| | | 177. Venous Thrombosis |
| | | 178. Alopecia Areata |
| | | 179. Angina Pectoris |
| | | 180. Arthritis |
| | | 181. Helicobacter Infections |
| | | 182. Gender Identity |
| | | 183. Acquired Immunodeficiency Syndrome |
| | | 184. Dermatitis, Atopic |
| | | 185. Retinal Diseases |
| | | 186. Syndrome |
| | | 187. Syphilis |
| | | 188. Tendon Entrapment |
| | | 189. Marijuana Abuse |
| | | 190. Meningeal Neoplasms |
| | | 191. Osteoporosis, Postmenopausal |
| | | 192. Ischemia |
| | | 193. Kidney Failure |
| | | 194. Liver Cirrhosis, Alcoholic |
| | | 195. Endometrial Neoplasms |
| | | 196. Endometriosis Infections |
| | | 197. Fetal Diseases |
| | | 198. Gout |
| | | 199. Graves Host Disease |
| | | 200. Graves Disease |
| | | 201. Hepatitis B, Chronic |
| | | 202. Hypercholesterolemia |
| | | 203. Hyperinsulinism |
| | | 204. Hypersensitivity, Immediate |
| | | 205. Immune System Diseases |
| | | 206. Celiac Disease |
| | | 207. Chlamydiphila Infections |
| | | 208. Chronic Periodontitis |
| | | 209. Cleft Palate |
| | | 210. Critical Illness |
| | | 211. Dengue |
| | | 212. Acute Kidney Injury |
| | | 213. Bronchial Hyperreactivity |
| | | 214. Vision |
| | | 215. Pelvic Inflammatory Disease |
| | | 216. Neoplasms, Cystic, Mucinous, and Serous |
| | | 217. Leishmaniasis, Cutaneous |
| | | 218. Leprosy |
| | | 219. Mouth Neoplasms |
| | | 220. Laryngostenosis |
| | | 221. Leukemia |
| | | 222. Leukemia, Myeloid, Acute |
| | | 223. Encephalitis |
| | | 224. Encephalitis, Viral |
| | | 225. Fibrosis |
| | | 226. Geographic Atrophy |
| | | 227. Hematologic Diseases |
| | | 228. Brain Abscess |
| | | 229. Cardiomyopathy, Dilated |
| | | 230. Addison Disease |
| | | 231. Albuminuria |
| | | 232. Colonic Neoplasms |
| | | 233. Periodontal Attachment Loss |
| | | 234. Periodontal Pocket |
| | | 235. Plaque, Atherosclerotic |
| | | 236. Lymphoma |
| | | 237. Recurrence |
| | | 238. Rhadomyolysis |
| | | 239. Pain |
| | | 240. Temporomandibular Joint Disorders |
| | | 241. Uterine Diseases |
| | | 242. Uveitis |
| | | 243. Wounds and Injuries |
| | | 244. Soft Tissue Injuries |
| | | 245. Substance-Related Disorders |
| | | 246. Thyroid Diseases |
| | | 247. Retinal Vasculitis |
| | | 248. Dementia |
| | | 249. Dermatomyositis |
| | | 250. Polymyositis |
| | | 251. Meningioma |
| | | 252. Dyslipidemias |
| | | 253. Epilepsy |
| | | 254. Epstein-Barr Virus Infections |
| | | 255. Hearing Loss, Sudden |
| | | 256. Infant, Premature, Diseases |
| | | 257. Carpal Tunnel Syndrome |
| | | 258. Cervical Intraepithelial Neoplasia |
| | | 259. Chagas Cardiomyopathy |
| | | 260. Chromosome Breakage |
| | | 261. Cleft Lip |
| | | 262. Atrial Fibrillation |
| | | 263. Atrophy |
| | | 264. Arteriosclerosis |
| | | 265. Bone Diseases, Metabolic |
| | | 266. Bone Neoplasms |
| | | 267. Calcinosis |
| | | 268. Skin Diseases |
| | | 269. Uvemeningoencephalitic Syndrome |
| | | 270. Pancreatitis, Alcoholic |
| | | 271. Postoperative Complications |
| | | 272. Carcinoma, Transitional Cell |
| | | 273. Cerebral Infarction |
| | | 274. Connective Tissue Diseases |
| | | 275. Fatty Liver |
| | | 276. Hepatitis, Alcoholic |
| | | 277. Genital Neoplasms, Female |
| | | 278. Leishmaniasis, Mucocutaneous |
| | | 279. Lymphangioma, yomatosis |
| | | 280. Narcolepsy |
| | | 281. Neointima |
| | | 282. Nephrotic Syndrome |
| | | 283. Ocular Hypertension |

NANO SOMA **INHIBITS CCL2**

DISEASES AND HEALTH PROBLEMS ASSOCIATED WITH HIGH LEVELS OF (PAI) SERPINE1

| | | | | |
|---|--|--|---|--|
| 1. Thrombophilia | 66. Neoplasms | 127. Periodontitis | 194. Virilism | 255. Disseminated Intravascular Coagulation |
| 2. Myocardial Infarction | 67. Disease Susceptibility | 128. Multiple Sclerosis | 195. Wounds and Injuries | 256. Glaucoma, Open-Angle |
| 3. Thrombosis | 68. Carcinoma, Ductal, Breast | 129. Neoplasm Metastasis | 196. Emphysema | 257. Asymptomatic Diseases |
| 4. Abortion, Habitual | 69. Lymphatic Metastasis | 130. Urinary Tract Infections | 197. Fatigue | 258. Heart Defects, Congenital |
| 5. Venous Thrombosis | 70. Mouth Neoplasms | 131. Carcinoma, Lobular | 198. Fractures, Bone | 259. Hemophilia A |
| 6. Hypertension | 71. Subarachnoid Hemorrhage | 132. Fetal Diseases | 199. Heart Diseases | 260. Multiple Sclerosis, Chronic Progressive |
| 7. Stroke | 72. Endometriosis | 133. Hyperinsulinism | 200. Hemorrhagic Disorders | 261. Retinal Artery Occlusion |
| 8. Brain Ischemia | 73. Hypercholesterolemia | 134. Infection | 201. Hyperlipidemias | 262. Retinal Neovascularization |
| 9. Diabetes Mellitus, Type 2 | 74. Hypersensitivity, Immediate | 135. Kidney Diseases | 202. Hypertension, Pregnancy-Induced | 263. Factor XIII Deficiency |
| 10. Cardiovascular Diseases | 75. Blood Coagulation Disorders | 136. Anemia, Sickle Cell | 203. Cerebral Hemorrhage | 264. Primary Graft Dysfunction |
| 11. Coronary Artery Disease | 76. Coronary Restenosis | 137. Crohn Disease | 204. Albuminuria | 265. Protein S Deficiency |
| 12. Obesity | 77. Liver Neoplasms | 138. Multiple Organ Failure | 205. Leukemia | 266. Radiation Pneumonitis |
| 13. Polycystic Ovary Syndrome | 78. Fetal Death | 139. Constriction, Pathologic | 206. Leukemia, Myeloid, Acute | 267. Vesico-Ureteral Reflux |
| 14. Insulin Resistance | 79. Inflammatory Bowel Diseases | 140. Plaque, Atherosclerotic | 207. Iron Overload | 268. Sinus Thrombosis, Intracranial |
| 15. Coronary Disease | 80. Arteriosclerosis | 141. Fatty Liver | 208. Neoplastic Cells, Circulating | 269. Microsatellite Instability |
| 16. Abortion, Spontaneous | 81. Carotid Artery Diseases | 142. Aneurysm, Ruptured | 209. Ovarian Failure, Premature | 270. Multiple Myeloma |
| 17. Pre-Eclampsia | 82. Proteinuria | 143. Connective Tissue Diseases | 210. Pain | 271. Musculoskeletal Diseases |
| 18. Inflammation | 83. Prostatic Neoplasms | 144. Carcinoma, Hepatocellular | 211. Schizophrenia | 272. Peripheral Vascular Diseases |
| 19. Cerebrovascular Accident | 84. Embryo Loss | 145. Weight Loss | 212. Scleroderma, Systemic | 273. Community-Acquired Infections |
| 20. Recurrence | 85. Activated Protein C Resistance | 146. Migraine Disorders | 213. Sleep Apnea Syndromes | 274. Death, Sudden, Cardiac |
| 21. Asthma | 86. Neoplasm Recurrence, Local | 147. Puberty, Precocious | 214. Stress, Psychological | 275. Delayed Graft Function |
| 22. Metabolic Syndrome X | 87. Osteoporosis | 148. Necrosis | 215. Tachycardia, Ventricular | 276. Angina, Unstable |
| 23. Disease Progression | 88. Familial Mediterranean Fever | 149. Liver Diseases | 216. Thrombotic Microangiopathies | 277. Blood Loss, Surgical |
| 24. Pregnancy Complications, Hematologic | 89. Endometrial Neoplasms | 150. Behcet Syndrome | 217. Tobacco Use Disorder | 278. Hemolytic-Uremic Syndrome |
| 25. Atherosclerosis | 90. Cerebrovascular Disorders | 151. Hearing Loss, Sudden | 218. Urine Diseases | 279. Hypertension, Pulmonary |
| 26. Diabetic Retinopathy | 91. Shock, Septic | 152. Hemorrhage | 219. Intestinal Atresia | 280. Hypertriglyceridemia |
| 27. Liver Cirrhosis | 92. Infertility | 153. Fetal Growth Retardation | 220. Intracranial Arteriosclerosis | 281. Memory Disorders |
| 28. Kidney Failure, Chronic | 93. Pneumonia | 154. Ovarian Neoplasms | 221. Intracranial Embolism and Thrombosis | 282. Neovascularization, Pathologic |
| 29. Diabetes Mellitus | 94. Arterial Occlusive Diseases | 155. Protein C Deficiency | 222. Intracranial Hemorrhages | 283. Neuropsychological Tests |
| 30. Sepsis | 95. Postoperative Hemorrhage | 156. Gingival Overgrowth | 223. Idiopathic Pulmonary Fibrosis | 284. Pneumoconiosis |
| 31. Thromboembolism | 96. Blood Coagulation Disorders, Inherited | 157. Kidney Neoplasms | 224. Peptic Ulcer Hemorrhage | 285. Carcinoma, Medullary |
| 32. Breast Neoplasms | 97. Intracranial Thrombosis | 158. beta-Thalassemia | 225. Periodontitis, Juvenile | 286. Acute Lung Injury |
| 33. Arthritis, Rheumatoid | 98. Ischemia | 159. Calcinosis | 226. Peritonitis | 287. Colitis, Ischemic |
| 34. Antiphospholipid Syndrome | 99. Intracranial Aneurysm | 160. Central Serous Choroidopathy | 227. Pneumococcal Infections | 288. Stomach Ulcer |
| 35. Lupus Erythematosus, Systemic | 100. Hyperhomocysteinemia | 161. Dementia | 228. Puerperal Disorders | 289. Systemic Inflammatory Response Syndrome |
| 36. Infertility, Female | 101. Osteoporosis, Postmenopausal | 162. Atrial Fibrillation | 229. Respiratory Tract Infections | 290. Taste Perception |
| 37. Osteonecrosis | 102. Syndrome | 163. Autoimmune Diseases | 230. Rhinitis, Allergic, Perennial | 291. Postthrombotic Syndrome |
| 38. Pulmonary Embolism | 103. Carcinoma, Non-Small-Cell Lung | 164. Lung Diseases | 231. Severe Acute Respiratory Syndrome | 292. Duodenal Ulcer |
| 39. Pregnancy Complications, Cardiovascular | 104. Carotid Stenosis | 165. Lung Diseases, Interstitial | 232. Fibromatosis, Aggressive | 293. Esophagitis |
| 40. Colorectal Neoplasms | 105. Chorioamnionitis | 166. Meningioma | 233. Graft Occlusion, Vascular | 294. Siderosis |
| 41. Diabetic Nephropathies | 106. Fibromyalgia | 167. Meningitis, Pneumococcal | 234. Gram-Negative Bacterial Infections | 295. Hemorrhagic Fever with Renal Syndrome |
| 42. Chronic Disease | 107. Glioblastoma | 168. Alveolar Bone Loss | 235. Hepatitis B, Chronic | 296. Disease Models, Animal |
| 43. Pulmonary Disease, Chronic Obstructive | 108. Stomach Neoplasms | 169. Multiple Sclerosis, Relapsing-Remitting | 236. Edema | 297. Esophageal Neoplasms |
| 44. Lung Neoplasms | 109. Adenocarcinoma | 170. Osteoarthritis | 237. Critical Illness | 298. Cryoglobulinemia |
| 45. Premature Birth | 110. Amyotrophic Lateral Sclerosis | 171. Osteomyelitis | 238. Celiac Disease | 299. Diabetes Mellitus, Type 1 |
| 46. Myocardial Ischemia | 111. Brain Infarction | 172. Renal Artery Obstruction | 239. Birth Weight | 300. Abruptio Placentae |
| 47. Retinal Vein Occlusion | 112. Glioma | 173. Sclerosis | 240. Bronchial Hyperreactivity | 301. Cerebral Arterial Diseases |
| 48. Femur Head Necrosis | 113. Amyloidosis | 174. Sleep Apnea, Obstructive | 241. Acute-Phase Reaction | 302. Carcinoma, Renal Cell |
| 49. Vascular Diseases | 114. Burns | 175. Streptococcal Infections | 242. Airway Obstruction | 303. Takayasu Arteritis |
| 50. Diabetes Complications | 115. Obesity, Morbid | 176. Wegener Granulomatosis | 243. Weight Gain | 304. Respiratory Distress Syndrome, Newborn |
| 51. Postoperative Complications | 116. Obstetric Labor, Premature | 177. Nephritis | 244. Small Cell Lung Carcinoma | 305. Rhinitis, Allergic, Seasonal |
| 52. Cerebral Infarction | 117. Fetal Membranes, Premature Rupture | 178. Nephrotic Syndrome | 245. Thinness | 306. Placenta Diseases |
| 53. Dyslipidemias | 118. HELLP Syndrome | 179. Pancreatitis | 246. Adenomatous Polyposis Coli | 307. Primary Ovarian Insufficiency |
| 54. Aortic Aneurysm, Abdominal | 119. Hepatitis C, Chronic | 180. Intracranial Embolism | 247. Respiratory Distress Syndrome, Adult | 308. Meningeal Neoplasms |
| 55. Meningococcal Infections | 120. Uterine Cervical Neoplasms | 181. Klinefelter Syndrome | 248. Taste | 309. Hyperlipoproteinemia Type II |
| 56. Acute Disease | 121. Venous Insufficiency | 182. Puberty, Delayed | 249. Varicose Veins | 310. Keloid |
| 57. Alzheimer Disease | 122. Renal Insufficiency, Chronic | 183. Sinusitis | 250. Ventricular Fibrillation | 311. Leg Ulcer |
| 58. Glomerulonephritis, IGA | 123. Glomerulonephritis | 184. Skin Diseases | 251. Brain Neoplasms | 312. Limb Deformities, Congenital |
| 59. Carcinoma, Squamous Cell | 124. Diabetic Angiopathies | 185. Testicular Neoplasms | 252. Cognition Disorders | 313. Liver Cirrhosis, Alcoholic |
| 60. Lupus Nephritis | 125. Bacteremia | 186. Autistic Disorder | 253. Depressive Disorder, Major | |
| 61. Neoplasm Invasiveness | 126. Body Weight | 187. Bronchopulmonary Dysplasia | 254. Diabetes, Gestational | |
| 62. Coronary Stenosis | | 188. Anoxia | | |
| 63. alpha 1-Antitrypsin Deficiency | | 189. Dementia, Vascular | | |
| 64. Cerebral Palsy | | 190. Depressive Disorder | | |
| 65. Pregnancy Complications | | 191. Hepatitis C | | |
| | | 192. Hypertrophy, Left Ventricular | | |
| | | 193. Hypopituitarism | | |

DISEASES AND HEALTH PROBLEMS ASSOCIATED WITH HIGH TNF - A PROTEIN

| | | | |
|-------------------------|-----------------------------|---------------------------------|------------------------------|
| 1 - ALZHEIMER'S DISEASE | 8 - METABOLIC DISEASES | 15 - ECZEMA | 21 - SYSTEMIC LUPUS |
| 2 - EPILEPSY | 9 - OBESITY | 16 - HIDRADENITIS SUPPURATIVA | ERYTHEMATOSUS |
| 3 - BIPOLAR DISORDER | 10 - DIABETES (TYPE 2) | 17 - SARCOIDOSIS | 22 - CARDIOVASCULAR DISEASES |
| 4 - PARKINSON'S DISEASE | 11 - PULMONARY DISEASE | 18 - SCLERODERMA | 23 - ATHEROSCLEROSIS |
| 5 - DEPRESSION | 12 - ASTHMA | 19 - INFLAMMATORY BOWEL DISEASE | 24 - MYOCARDIAL INFARCTION |
| 6 - OSTEOPOROSIS | 13 - ANKYLOSING SPONDYLITIS | 20 - NON ALCOHOLIC FATTY LIVER | |
| 7 - CANCER | 14 - MULTIPLE SCLEROSIS | DISEASE | |

NANO SOMA REDUCES TNF - A PROTEIN**DISEASES AND HEALTH PROBLEMS ASSOCIATED WITH HIGH LEVELS OF RETINAL BINDING PROTEIN 4**

| | | | | |
|----------------------------|-----------------------------|-----------------------------|------------------------------|-------------------------------|
| 1. Insulin Resistance | 8. Cardiovascular Diseases | 14. HepaAAs C, Chronic | 20. Carcinoma, Squamous Cell | 25. Osteoporosis |
| 2. Diabetes Mellitus, Type | 9. Hypertension | 15. HIV Infections | 21. Diabetic Nephropathies | 26. Overweight |
| 3. Diabetes, Gestational | 10. Hypertriglyceridemia | 16. Hyperlipidemias | 22. Dyslipidemias | 27. Polycystic Ovary Syndrome |
| 4. Obesity | 11. Inflammation | 17. Kidney Failure, Chronic | 23. Neoplasms | 28. Prediabetic State |
| 5. Metabolic Syndrome X | 12. Glucose Intolerance | 18. Coronary Artery Disease | 24. Obesity, Abdominal | 29. Proteinuria |
| 6. Diabetes Complications | 13. Head and Neck Neoplasms | 19. Atherosclerosis | | |
| 7. Alzheimer Disease | | | | |

NANO SOMA DECREASES RETINAL BINDING PROTEIN 4**DISEASES AND HEALTH PROBLEMS ASSOCIATED WITH LOW ADIPOQ**

| | | | |
|-------------------------------|--|--|--|
| 1. Diabetes Mellitus, Type 2 | 43. Alzheimer Disease | 81. Hypertriglyceridemia | 116. Puberty, Delayed |
| 2. Obesity | 44. Hyperglycemia | 82. Cerebrovascular Accident | 117. Mucocutaneous Lymph Node Syndrome |
| 3. Insulin Resistance | 45. Hepatitis C, Chronic | 83. Chronic Disease | 118. Pancreatitis |
| 4. Metabolic Syndrome X | 46. Carcinoma | 84. Hyperaldosteronism | 119. Postoperative Complications |
| 5. Cardiovascular Diseases | 47. Prediabetic State | 85. Body Weight | 120. Lipodystrophy, Congenital Generalized |
| 6. Coronary Artery Disease | 48. Diabetic Neuropathies | 86. Fetal Macrosomia | 121. Hyperandrogenism |
| 7. Hypertension | 49. Adenocarcinoma | 87. Prostatic Hyperplasia | 122. Infant, Newborn, Diseases |
| 8. Polycystic Ovary Syndrome | 50. Coronary Stenosis | 88. Renal Insufficiency, Chronic | 123. Cellulitis |
| 9. Colorectal Neoplasms | 51. Cerebral Infarction | 89. Retinal Vein Occlusion | 124. Dementia |
| 10. Diabetic Nephropathies | 52. Pancreatic Neoplasms | 90. Hypoglycemia | 125. Diabetic Foot |
| 11. Overweight | 53. Sleep Apnea, Obstructive | 91. Acne Vulgaris | 126. Psychotic Disorders |
| 12. Myocardial Infarction | 54. Anorexia Nervosa | 92. Arthritis, Rheumatoid | 127. Puberty, Precocious |
| 13. Inflammation | 55. Endometrial Neoplasms | 93. Carcinoma, Ductal, Breast | 128. Scleroderma, Limited |
| 14. Diabetes Mellitus | 56. Intracranial Arteriosclerosis | 94. Cognition Disorders | 129. Peripheral Arterial Disease |
| 15. Obesity, Morbid | 57. Vascular Diseases | 95. Osteoarthritis, Knee | 130. Prenatal Exposure Delayed Effects |
| 16. Diabetes, Gestational | 58. Abortion, Habitual | 96. Periodontitis | 131. Osteoarthritis |
| 17. Fatty Liver | 59. Hypertension, Pregnancy-Induced | 97. Respiratory Distress Syndrome, Adult | 132. Calcinosis |
| 18. Weight Loss | 60. Lupus Erythematosus, Systemic | 98. Uremia | 133. Spinal Fractures |
| 19. Diabetes Complications | 61. Colonic Neoplasms | 99. Carcinoma, Pancreatic Ductal | 134. Subarachnoid Hemorrhage |
| 20. Breast Neoplasms | 62. Hypercholesterolemia | 100. Hypertension, Pulmonary | 135. Thinness |
| 21. Diabetic Angiopathies | 63. Hyperinsulinism | 101. Lymphoma, Non-Hodgkin | 136. Infection |
| 22. Stroke | 64. Osteoporosis | 102. Neuropsychological Tests | 137. Adenoma |
| 23. Weight Gain | 65. Sleep | 103. Pain, Postoperative | 138. Carcinoma, Squamous Cell |
| 24. Coronary Disease | 66. Proteinuria | 104. Pregnancy Complications | 139. HepaHs B, Chronic |
| 25. Prostatic Neoplasms | 67. Kidney Neoplasms | 105. Scleroderma, Diffuse | 140. Edema |
| 26. Diabetes Mellitus, Type 1 | 68. Acute Disease | 106. Thrombophilia | 141. Multiple Sclerosis |
| 27. Disease Progression | 69. Asthma | 107. Lung Neoplasms | 142. Cardiomyopathy, Dilated |
| 28. Atherosclerosis | 70. Lipodystrophy | 108. Osteoporosis, Postmenopausal | 143. Fibrosis |
| 29. Brain Ischemia | 71. Liver Cirrhosis | 109. Primary Ovarian Insufficiency | 144. Hyperlipidemias |
| 30. Schizophrenia | 72. Liver Neoplasms | 110. Psychiatric Status Rating Scales | 145. Metabolism, Inborn Errors |
| 31. Kidney Failure, Chronic | 73. ClomerulonephriHs, IGA | 111. Glucose Metabolism Disorders | 146. Multiple Organ Failure |
| 32. Glucose Intolerance | 74. Diabetic Cardiomyopathies | 112. Asphyxia Neonatorum | 147. Ovarian Failure, Premature |
| 33. Dyslipidemias | 75. Esophageal Neoplasms | 113. Behavior Therapy | 148. Kidney Diseases |
| 34. Metabolic Diseases | 76. Carcinoma, Renal Cell | 114. Biliary Atresia | 149. Stress, Psychological |
| 35. HIV Infections | 77. HIV-Associated Lipodystrophy Syndrome | 115. Carcinoma, Non-Small-Cell Lung | 150. Tobacco Use Disorder |
| 36. Neoplasms | 78. Ischemia | | 151. Plaque, Atherosclerotic |
| 37. Diabetic Retinopathy | 79. Pulmonary Disease, Chronic Obstructive | | |
| 38. Obesity, Abdominal | 80. Stomach Neoplasms | | |
| 39. Albuminuria | | | |
| 40. Pre-Eclampsia | | | |
| 41. Birth Weight | | | |
| 42. Carotid Artery Diseases | | | |

NANO SOMA INCREASES ADIPOQ

FUNCTIONS OF NANO SOMA

- Provides therapeutic effects of vitamin D3
- Restores proper immune functions
- Increases Vitamin C, Adiponectin and Testosterone levels
- Inhibits TNF- α and NF- κ B
- Regulates thousands of human genes including ICAM1 (Intercellular Adhesion Molecule 1)
- Reduces inflammation and pain
- Enhances wound healing
- Increases energy level & cognitive function
- Defends against viruses and bacteria
- Relieves itchy eyes and itchy skin
- Rejuvenates healthier and youthful skin
- Repairs damaged blood vessels and organs
- Regulates abnormal biomarkers
- Corrects the underlying health problems
- Improves longevity and anti-aging

FEATURES OF NANO SOMA

INITIATIVE
FOR
CHRONIC
DISEASES

APPROPRIATE
USE

SAFE
OTC
PRODUCT

QUALITY
&
EFFICACY

ACCESSIBILITY

AFFORDABILITY



www.nanosoma.net



Product of
Switzerland